

MULTI-TELEPATCHER AUDIO CONFERENCE SYSTEM



OVERVIEW

The Multi-Telepatcher II (MT-II), is a solid state audio conferencing system. The MT-II connects to standard two-wire telephone lines, accommodating from 8 to 48 lines in a single system. The MT-II can be used in conjunction with an in-house telephone system or can be directly connected to the public network with its own listed directory number.

Callers who are transferred or dial into the MT-2 system are answered with a user-recorded greeting and prompted to enter the desired conference "room" that they wish to join. Callers may also be issued a two-digit PIN code to allow them to move from one conference to another or have a private sidebar conference with another participant, all on the same phone call.

While not required for system operation, the MT-2 can be monitored via P.C. to allow a moderator to observe the active ports, see which conference rooms are occupied, which port is speaking, and they can move people from one room to another.

©12-10-2003

BENEFITS

Conference calling is no longer a luxury, it is a necessary tool in everyday business. Third party services are expensive and may not be secure. Companies can leverage the multiple conference capability of the MT-2 against the cost and inconvenience of service bureaus or purchasing several smaller systems.

The flexibility of the MT-2 can accommodate simple group conferences, distance learning, broadcasting, perimeter security and many other applications all on the same platform.

FEATURES & SPECIFICATIONS

8 to 48 Ports available in two-port increments
8 separate Conference Rooms
Private one to one Sidebar conferences
Broadcast Listen Only Bridge
2 software controlled Music Inputs
Security Codes
Automated Attendant
POTS line compatible
Counselor port for Distance Learning (Optional)
Serial & Parallel ports, internal modem
T1 compatible using host PBX or Channel Bank
Insertion loss amplification
Switched Gain-Equalizer on each port (Optional)
110 VAC optional 220VAC @ 2A
RJ21X Interface

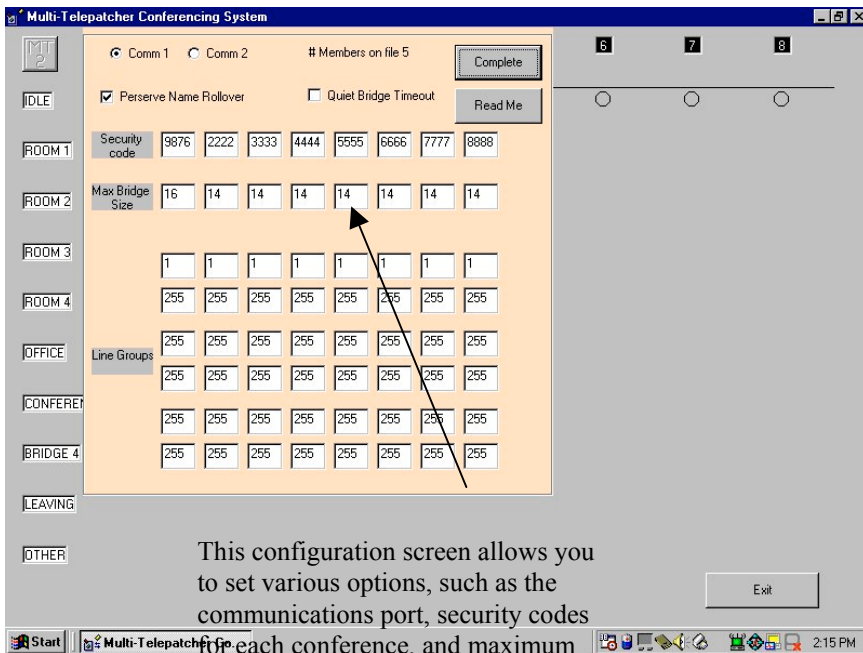
949-250-9400 Fax 949-261-1169

17925 Sky Park Circle, Irvine, CA USA 92614

www.tecinter.com

P.C. Administration & Control

The MT-II Online Program resides on a dedicated Windows P.C. A conference administrator may observe real-time activity of the conference rooms and their participants. The administrator can move callers from one room to another, place them in private side-bar “chat rooms”, and disconnect callers from the conference. In addition, the online program can have customized macros that respond to a point and click button. These macros can be used to transfer a caller out of the system, or any other special handling.

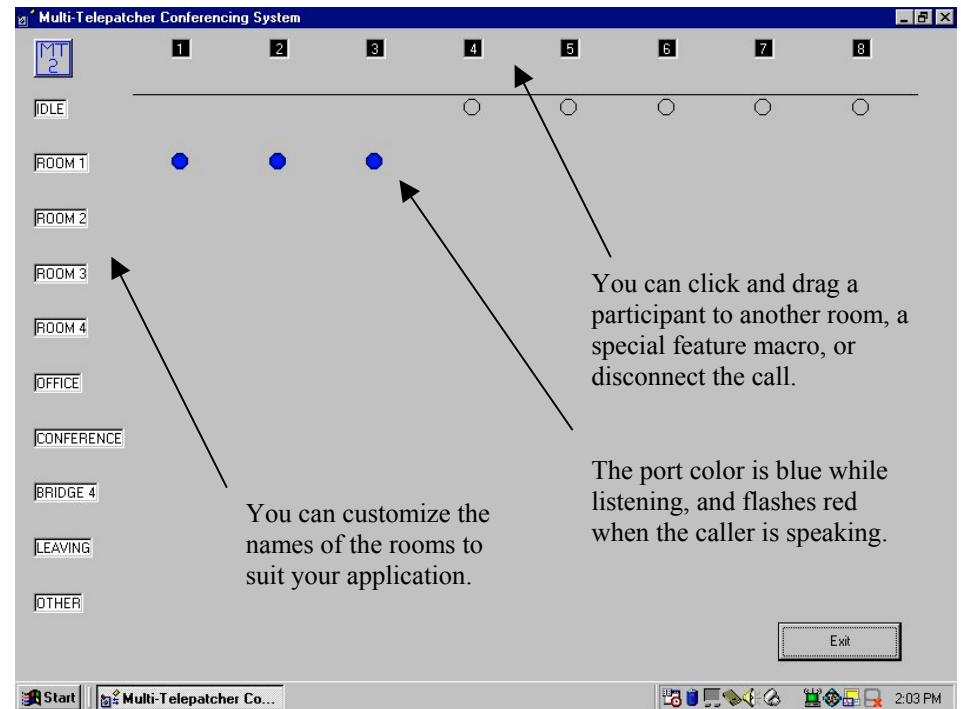


This configuration screen allows you to set various options, such as the communications port, security codes for each conference, and maximum number of participants per conference.

Line Groups are assigned for up to 48 ports. Name Rollover allows you keep the names of the participants after the session is over.

This is the top screen, showing the conference ports, and their status. Ports one, two and three are currently in Room 1. The other ports are currently idle.

The online program contains an interface to an Excel document for pin number access. The administrator can enter the names of the participants or the name of a conference such as “sales meeting” along with a pin number in the Excel document. The callers would then be prompted to enter a pin number and routed to the appropriate conference. The pin numbers are independent of the MT-II security codes.



You can customize the names of the rooms to suit your application.

You can click and drag a participant to another room, a special feature macro, or disconnect the call.

The port color is blue while listening, and flashes red when the caller is speaking.